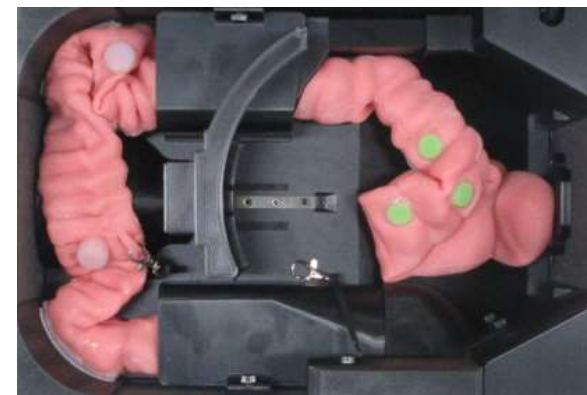


Colon model exchange manual



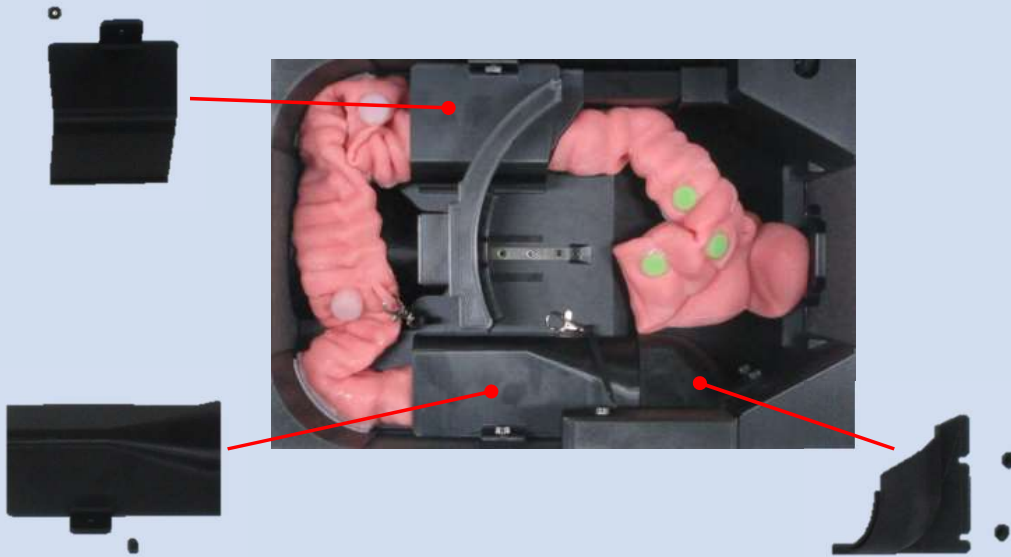
Colon model not set



Colon model set state

Colon model replacement manual (removal)

① Remove the colon model cover set inside.



Remove the three colon model covers.

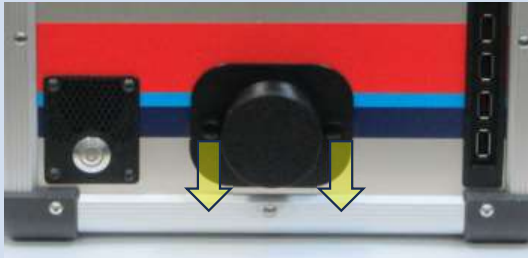
② Remove the fixing hook of the colon model



At the transverse colon, remove the hook fixed to the resin spring. For the sigmoid colon, remove the fixing hook of the extendable resin spring that extends from the bottom of the side camera.

Colon model replacement manual (removal)

③ Remove the anal cover



Remove the two screws and remove the anal cover. Remove the anal cap at the same time.

④ Put the anus inside



After removing the anal cover, place the anal area inside and attach the anal cap to prevent lubricant from leaking.

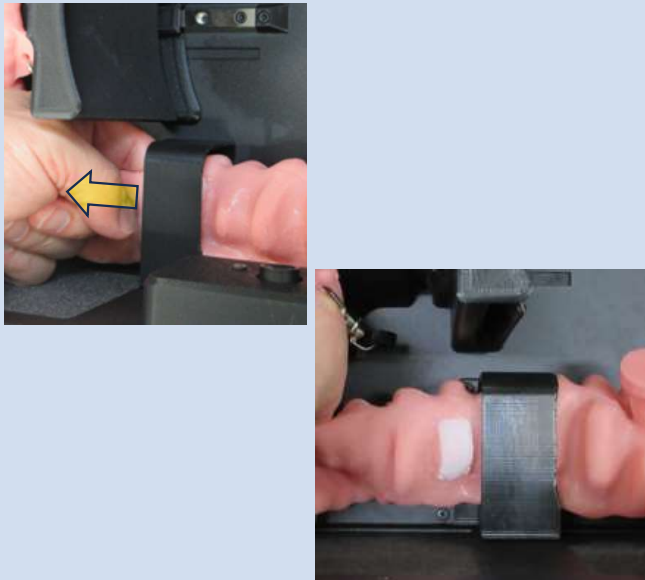
⑤ Remove the cecum



Pinch the appendix and gently pull it to remove it from the hook-and-loop fastener.

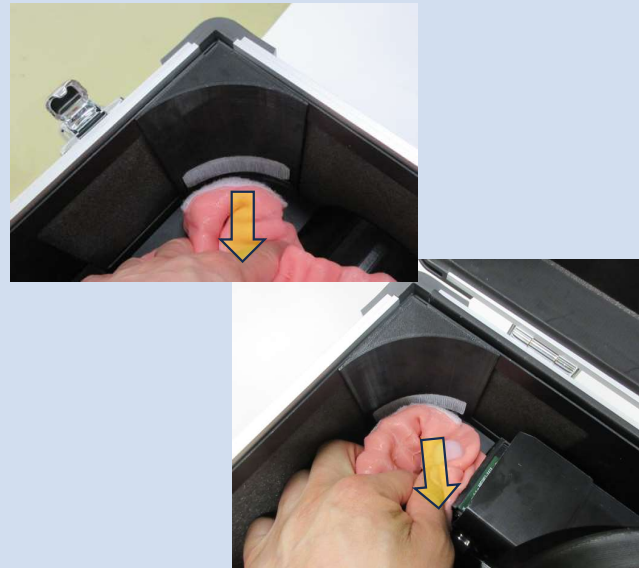
Colon model replacement manual (removal)

⑥ Remove the ascending part



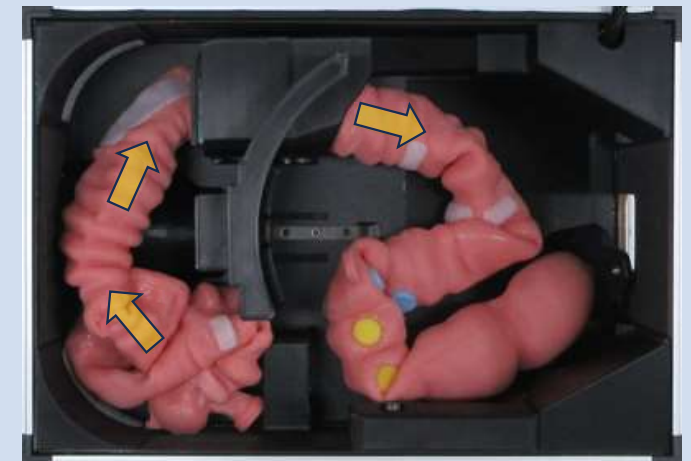
Pull the ascending part in the direction of the arrow to remove it from the hook-and-loop fastener.

⑦ Remove the sural curvature and splenic curvature



Gently pull the lumbar curvature and splenic curvature inward to remove them from the hook-and-loop fastener.

⑧ Pull out the descending part from the case.



Remove the hook-and-loop fastener attached to the descending part and gradually pull the colon model toward the anus.

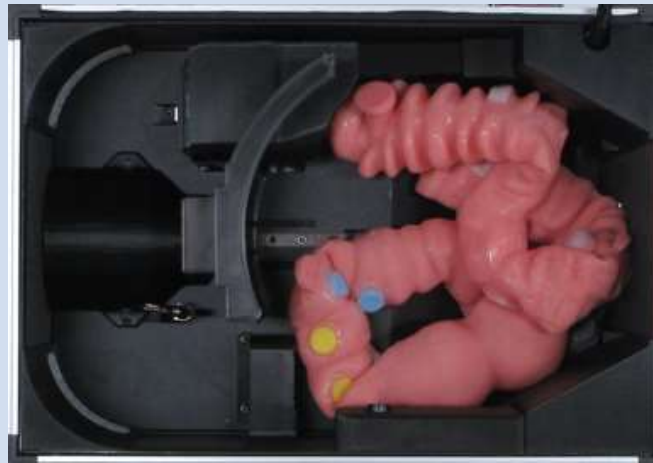
Colon model replacement manual (removal)

⑨ Pull out from the descending part



Continue withdrawing slowly.

⑩ Pull out to the anal area



Pull everything out.

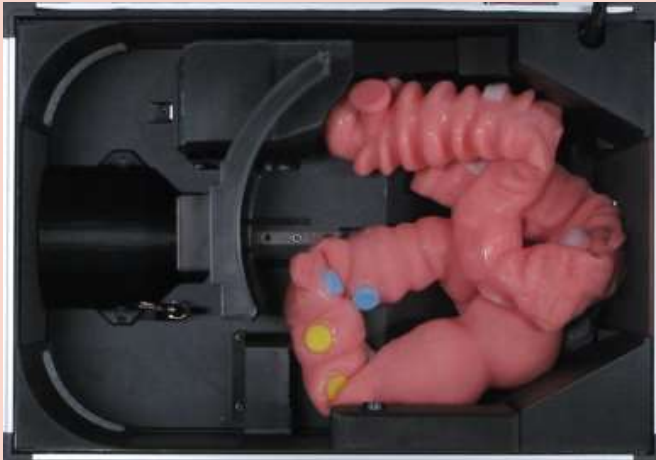
⑪ Remove the colon model



The state with the colon model removed.

Colon model replacement manual (installation)

① Place the colon model into the device



Insert the colon model into the space on the anal side.

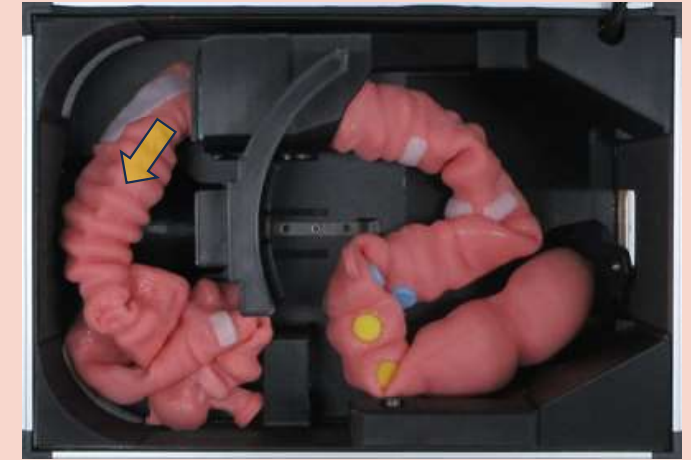
*In the anal area to prevent lubricant from leaking into the device. Insert the anal cover.

② Insert from the case of the descending part



Insert and pull out the cecum through the descending case.

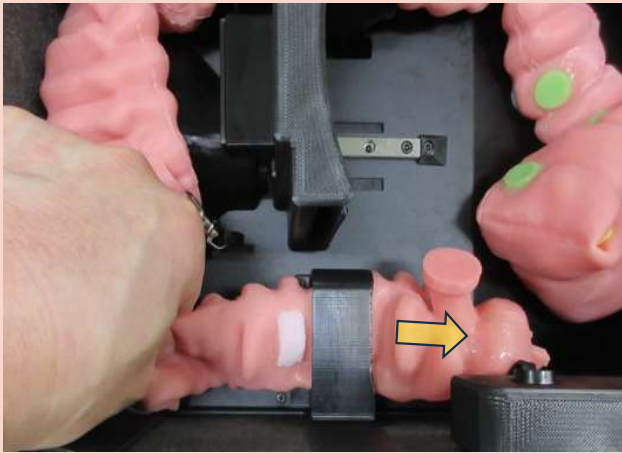
③ Pull out to the splenic flexure



Pull out the colon model until the hook-and-loop fastener attached to the splenic curvature of the colon model comes out of the descending part of the case.

Colon model replacement manual (installation)

④ Pass under the resin cover of the ascending section



Pass the bottom of the resin cover of the ascending colon with the hook-and-loop fastener facing upward.

⑤ Pull it out to the cecal area



Pull out the part of the appendix where the hook-and-loop fastener is attached to the place where the hook-and-loop fastener is attached to the wall of the device.

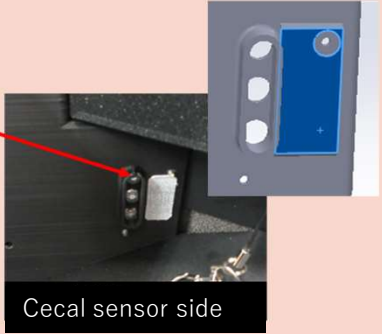
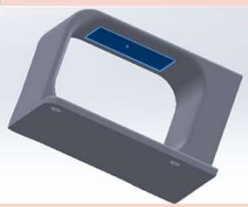
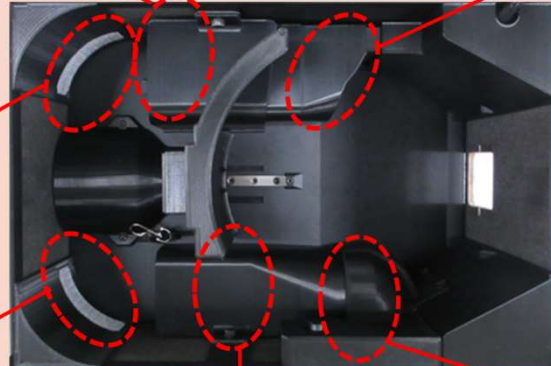
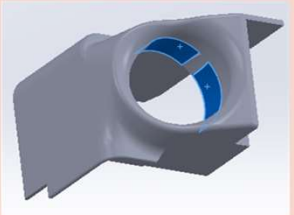
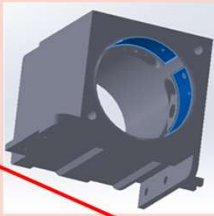
⑥ Place the entire colon model



The entire colon model is placed in the specified position within the device. Next, attach the hook-and-loop fasteners at each location.

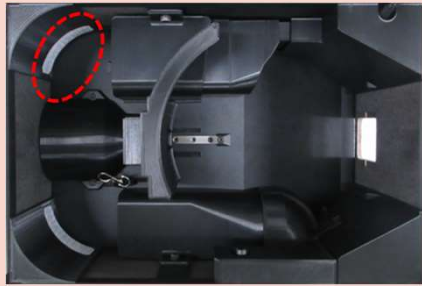
Colon model replacement manual (installation)

⑦ Hook-and-loop fastener installation position



Colon model replacement manual (installation)

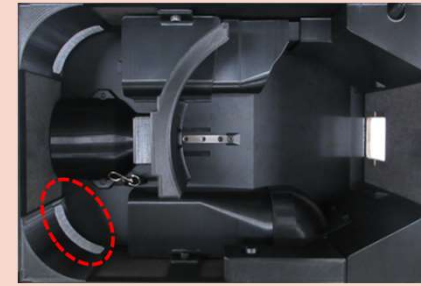
⑦-1 Hook and loop fastener installation (splenic curvature)



Adjust the position of the large intestine model so that the male and female ends of the hook-and-loop fastener match, and attach firmly by pressing the entire surface with your fingers.

**If the position shifts, peel it off and reapply.*

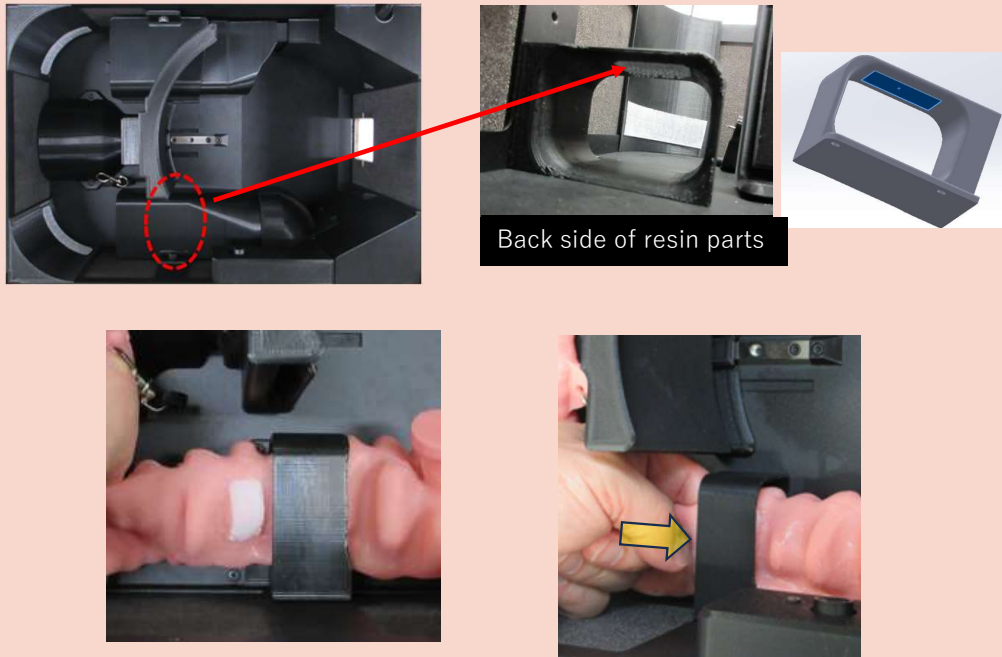
⑦-2 Hook-and-loop fastener installation (hepatic curvature)



Adjust the large intestine model so that the male and female hook-and-loop fasteners are aligned, and attach firmly by pressing the entire surface with your fingers.

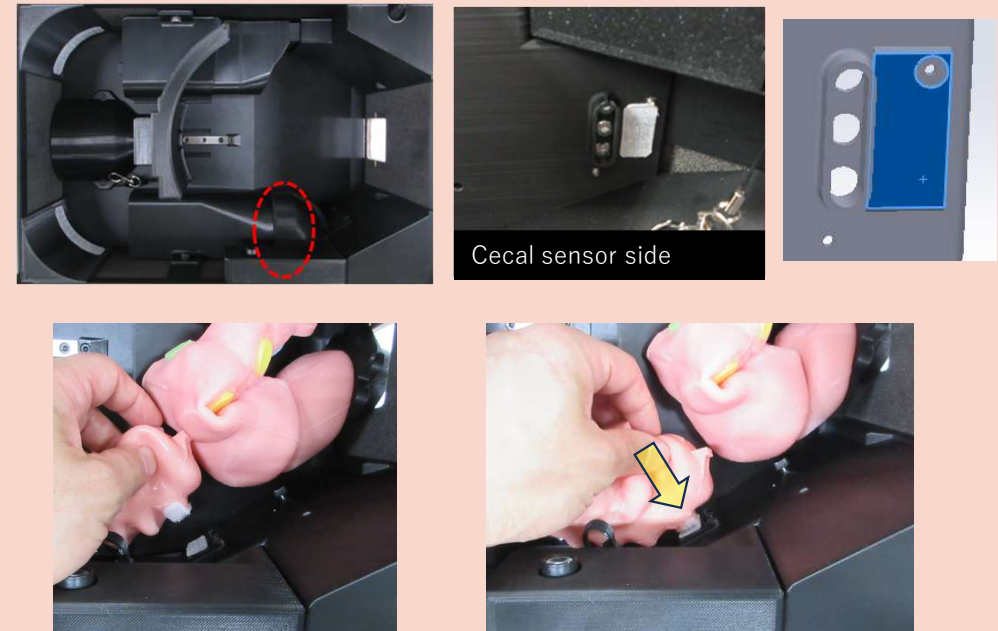
Colon model replacement manual (installation)

⑦-3 Hook and loop fastener installation (ascending part)



Align the ascending part of the hook-and-loop fastener and press it against the back of the resin part from the bottom of the colon model to securely attach it.

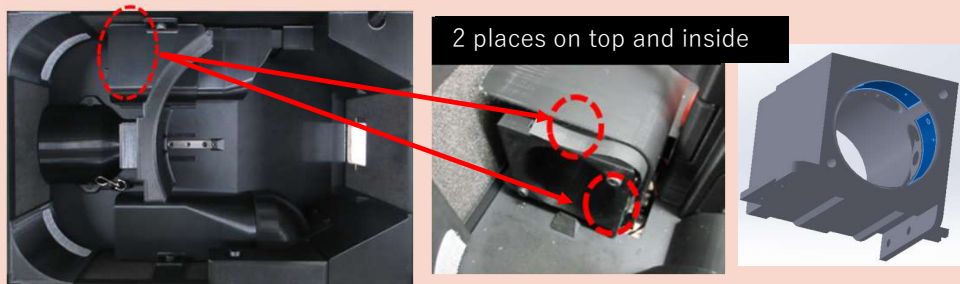
⑦-4 Hook and loop fastener installation (cecum)



Adjust the model so that the male and female hooks of the hook-and-loop fastener on the cecum line up, and attach firmly by pressing the entire surface with your fingers.

Colon model replacement manual (installation)

⑦-5 Hook and loop fastener installation (back side of descending part)



inside

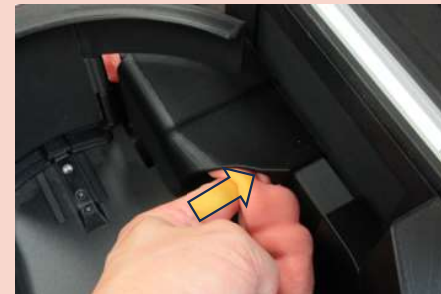
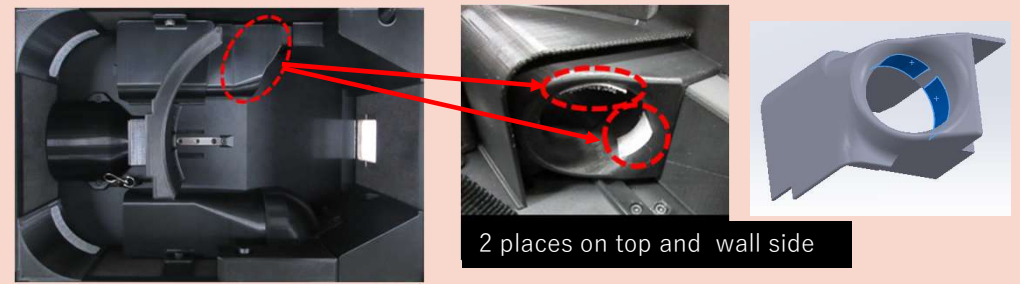


upper side

After aligning the inner hook-and-loop fastener, align the top hook-and-loop fastener and attach firmly.

*In order to secure a working space for hands-on work during installation, trainingPlease move it to the intermediate position.

⑦-6 Hook and loop fastener installation (sigmoid)



wall side

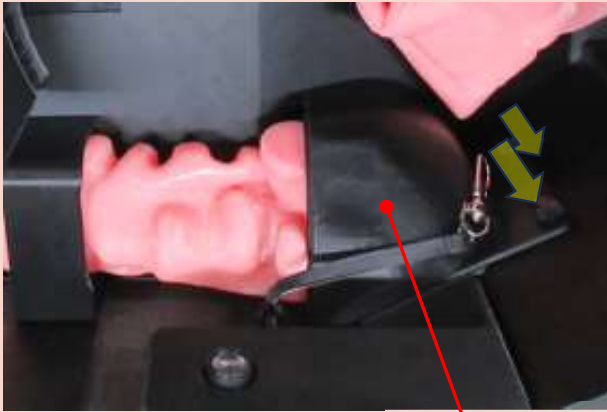


upper side

After aligning the hook-and-loop fasteners on the wall, align the hook-and-loop fasteners on the top side and attach firmly.

Colon model replacement manual (installation)

⑧ Attaching the resin cover to the cecum

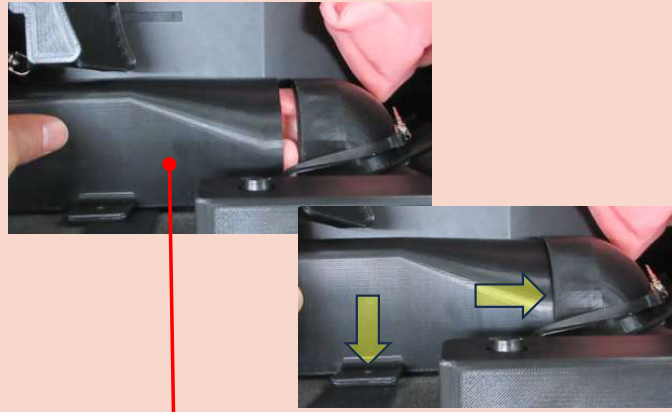


Attach the resin cover of the cecum by fixing it with two screws.

**Screws may come off during use or while moving the device.*

Please make sure to tighten it firmly.

⑨ Attaching the resin cover to the ascending colon

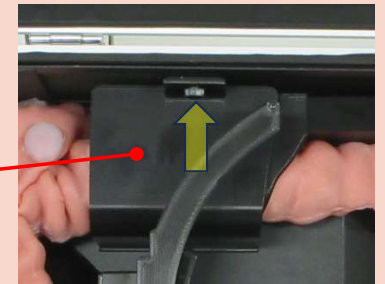


Slide the resin cover of the ascending colon and fit it into the resin cover of the cecum. Align the screw holes and secure.

**Screws may come off during use or while moving the device.*

Please make sure to tighten it firmly.

⑩ Attaching the resin cover to the descending colon



Slide the resin cover onto the SDJ case and secure it by aligning the screw holes.

**Screws may come off during use or while moving the device.*

Please make sure to tighten it firmly.

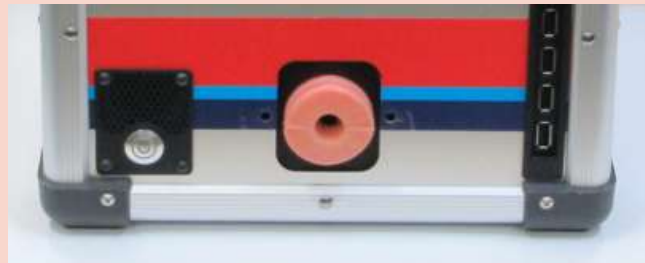
Colon model replacement manual (installation)

⑪ Attaching the hook for fixing the colon model



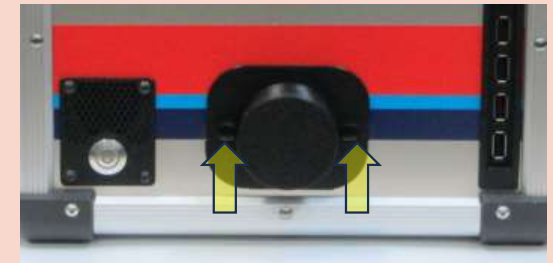
At the transverse colon, a hook fixed to a resin spring is attached, and at the sigmoid colon, a hook fixed to an extendable resin spring attached from below the side camera is attached.

⑫ Fixation of the anal area



Turn the letter ``UP'' written on the resin plate of the anus upwards inside the main body and take it out from the opening of the anus.

**Please remove the anal cap when performing this work.*



Place the lubricant applicator tool over the anal opening, and fix it with a screw while pressing the resin plate in the anal area from inside the device.

Installation completed